

DWG NO Z262901 SH

REVISIONS

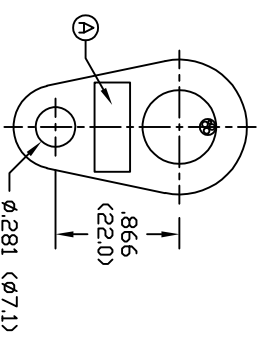
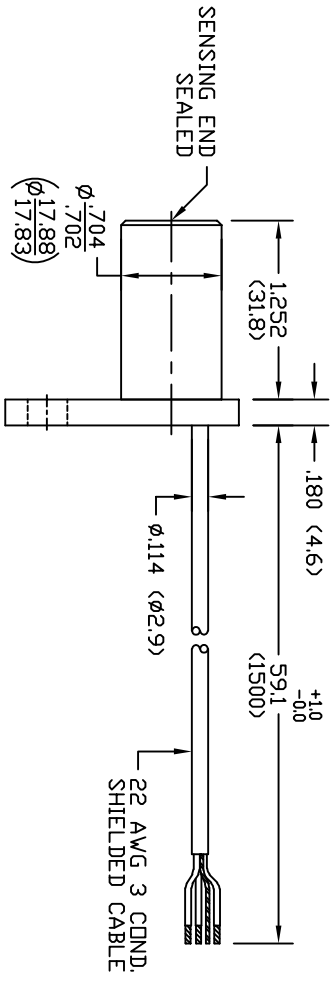
REV	DESCRIPTION	DATE	APPROVED

SPECIFICATION DATA:

PARAMETER	SPECIFICATION	REF.	TEST PROC.	% TEST
SUPPLY VOLTAGE	4.5 TO 24 VOLTS		SEE NOTE "D"	100
TEMP. SPEC.	-40°C TO +150°C			
SUPPLY CURRENT	10 mA TYP.			
OUTPUT TYPE	OPEN COLLECTOR		1-4KΩ PULL-UP	100

PRELIMINARY

OUTLINE



NOTES:

- A) MARKING: Z262901  
DATE CODE  
SS-INCLUS
- B) HOUSING MATERIAL: 303/304 STAINLESS STEEL
- C) LEADS: = +VDC  
RED = SIG  
WHITE = SIG  
BLACK = CDM  
SHIELD = NC

UNLESS OTHERWISE SPECIFIED  
DIM ARE IN INCHES  
TOL DN ANGLE ±1.0°  
.XX ±.015 .XXX ±.010  
FRACTIONS ±1/32

APPROVALS: DATE

DWG DA 11/22/21

CHK

ENG

QC

MFG



This drawing is the property of Smith Systems, Inc., and contains confidential and proprietary information. No part of this drawing may be disclosed or reproduced without the express written consent of Smith Systems, Inc. Products disclosed in this drawing may be the subject of pending or issued patents. www.ss-inc.us TM & Copyright Smith Systems, Inc. All rights reserved.

TITLE

ZERO SPEED SENSOR

SIZE	DWG NO.	SCALE	NTS	MATERIAL:	SHEET	REV
A	Z262901					—