

AT5 EVSE Fuse



DESCRIPTION

Adler AT5 EVSE fuses series are specially engineered and tested to provide best-in-class bolt down auxiliary fuse protection and high-performance protection in managing systems of Electrical and Hybrid Electrical Vehicles, up to 500 Vdc in ratings from 60 – 400A with a max breaking capacity of 20kA at 500Vdc. The AT5 fuse is ideal for battery and alternator protection application and other heavy gauge cables requiring ultra-high current protection.

FEATURES

- 500 Vdc EVSE fuse
- Rated Current: 60-200 A (30x50)
200-400 A (38x50)
- Rated Breaking Capacity: 20 kA at 500 Vdc
- Size: 30x50 mm, 38x50 mm
- General purpose fuse for EV charging equipment

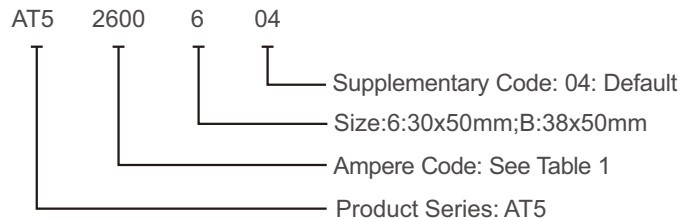
APPLICATIONS

- Battery pack protection
- Traction inverter protection
- Energy storage
- Power conversion
- High voltage power distribution
- Battery disconnect unit
- Primary Fuse
- Charging Fuse
- Auxiliary Fuses

AGENCY INFORMATION

- Designed to UL 248-13, UL 248-20, JASO D622
- UL certified (E485737)
- Manufactured under IATF 16949 quality system
- RoHS and REACH Compliant

PART NUMBER SYSTEM



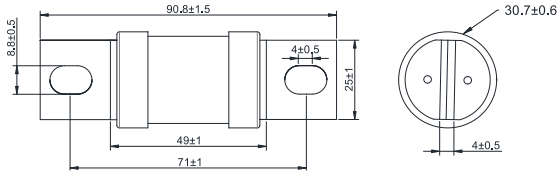
ELECTRICAL SPECIFICATIONS

Size (mm)	Part Number	Rated Current	Ampere Code	Rated Voltage	Breaking Capacity	Certifications UL
30x50	AT52600604	60 A	2600	500 Vdc	20 kA@500 Vdc	•
	AT52700604	70 A	2700			•
	AT52800604	80 A	2800			•
	AT52900604	90 A	2900			•
	AT53100604	100 A	3100			•
	AT53125604	125 A	3125			•
	AT53150604	150 A	3150			•
	AT53175604	175 A	3175			•
38x50	AT53200604	200 A	3200	500 Vdc	20 kA@500 Vdc	•
	AT53200B04	200 A	3200			•
	AT53250B04	250 A	3250			•
	AT53300B04	300 A	3300			•
	AT53350B04	350 A	3350			•
	AT53400B04	400 A	3400			•

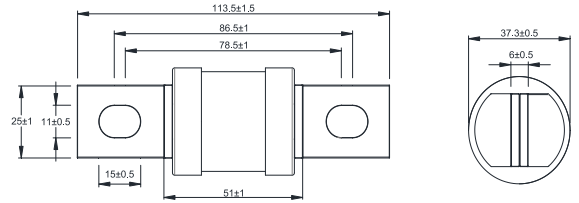
Table1 Note: 1. •=Certification obtained. UL File number:E485737
2. Temperature rise: <50 K.

DIMENSIONS (mm)

AT5xxx604

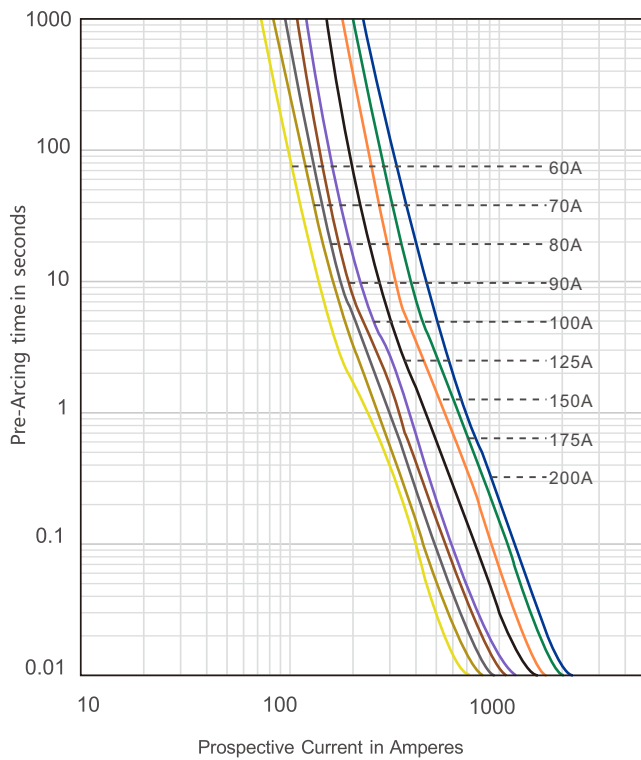


AT5xxxB04



TIME CURRENT CURVE

AT5xxx604



TIME CURRENT CURVE

AT5xxxB04

