

EF3 EV FUSE



DESCRIPTION

Adler EF3 series EV fuses are specially engineered and tested to provide best-in-class protection performance in protecting high power battery charging and managing systems of Electrical Vehicles and Hybrid Electrical Vehicles, up to 315 Vdc in ratings from 150A to 700A.

FEATURES

- Reliable clearing of DC fault currents
- High cycling performance
- Low watt losses
- Ultra-compact size and power density
- High breaking capacity to 50kA
- Operation as low as 410% I_n overload protection
- QR code marks on each fuse for traceability

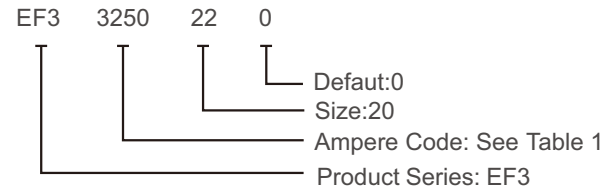
APPLICATIONS

- Battery pack protection
- Traction inverter protection
- Energy storage
- Power conversion
- High voltage power distribution
- Battery disconnect unit

AGENCY INFORMATION

- Designed to UL 248-20, ISO 8820-8, GB/T 31465
- UL certified (150A~500A)
- Manufactured under IATF 16949 quality system
- RoHS and REACH Compliant

PART NUMBER SYSTEM

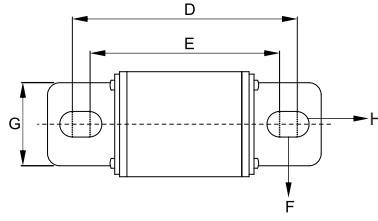
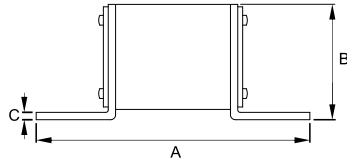


ELECTRICAL SPECIFICATIONS

Size (mm)	Part Number	Rated Current	Ampere Code	Rated Voltage	Breaking Capacity		Pre-arcing A ² sec	Wait Loss(W) 1.0I _n
					UL	Self-Certified		
77X20	EF33150220	150A	3150	200Vdc 315Vdc	4.1In~50kA@200 Vdc	6kA@315 Vdc	4500	23.1
	EF33175220	175A	3175	200Vdc 315Vdc	4.1In~50kA@200 Vdc	6kA@315 Vdc	6600	25.2
	EF33200220	200A	3200	200Vdc 315Vdc	4.1In~50kA@200 Vdc	6kA@315 Vdc	8500	27.5
	EF33250220	250A	3250	200Vdc 315Vdc	4.1In~50kA@200 Vdc	6kA@315 Vdc	16000	30.5
	EF33300220	300A	3300	200Vdc	4.1In~50kA@200 Vdc	-	29000	34.3
	EF33350220	350A	3350	200Vdc	○	50kA@200 Vdc	31500	37.5
79X32	EF33350370	350A	3350	250Vdc	4.1In~50kA@200 Vdc	-	28750	44.5
	EF33400370	400A	3400	250Vdc	4.1In~50kA@200 Vdc	-	43700	45.5
	EF33450370	450A	3450	250Vdc	4.1In~50kA@200 Vdc	-	56350	57.0
	EF33500370	500A	3500	250Vdc	4.1In~50kA@200 Vdc	-	67600	61.3
77X30	EF3360037A	600A	3600	150Vdc	○	50kA@200 Vdc	82000	66.0
	EF3370037A	700A	3700	150Vdc	○	50kA@200 Vdc	128000	75.0

Table1 1. ** --- UL File: E506668
2. ○ --- UL certification in process

DIMENSIONS (mm)

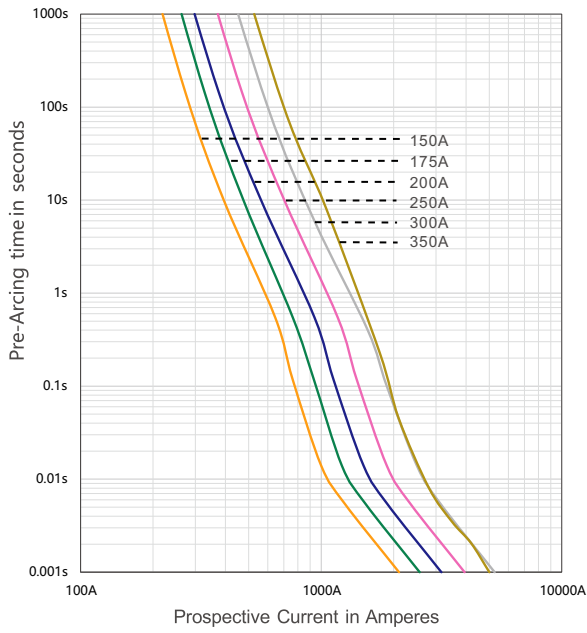


Fuse Size	A	B	C	D	E	F	G	H
77X20	77	25.0	2.0	61.5	50.0	5.75	20.0	Φ 8.5
79X32	79	24.0	2.0	62.5				
77X30	77	31.8	2.0	59.0	51.0	4.0	30.0	Φ 8.5

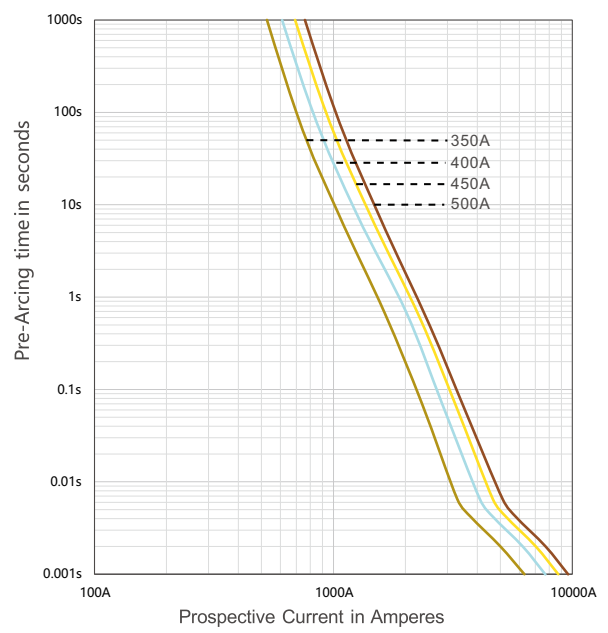
Table2

TIME CURRENT CURVE

EF3xxx220



EF3xxx370



EF3xxx37A

