

BHR Series Fuse Holder



DESCRIPTION:

The BHR series fuses holder is specially designed for use with DC fuses in automotive equipment and road vehicles. It works with ADLER vehicle fuse links. The holder is built with special automotive grade materials to withstand high fault currents and temperatures.

FEATURES:

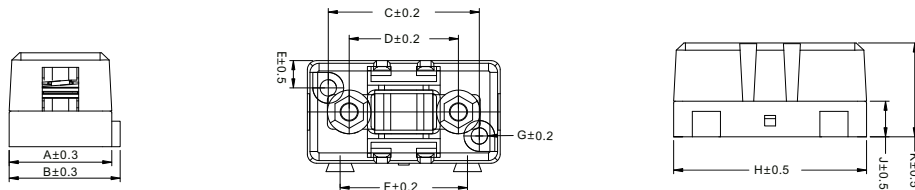
- Base Material: PA+GF UL94V0
- Operation Temperature: -40°C to 125°C
- Bolt Material: Stainless Steel

PARAMETER

Part Number	BHR030-15-M5	BHR059-25-M8	BHR061-25-M10
Product Specifications	Applicable Product: AEP	Applicable Product: AEY	Applicable Product: AEL
	Max. Voltage: 65 Vdc	Max. Voltage: 100 Vdc	Max. Voltage: 120 Vdc
	Max. Current: 200 A	Max. Current: 500 A	Max. Current: 800 A
	Max. Torque: 3.5 N.m	Max. Torque: 12 N.m	Max. Torque: 19 N.m
	Bolt Size: M5	Bolt Size: M8	Bolt Size: M10

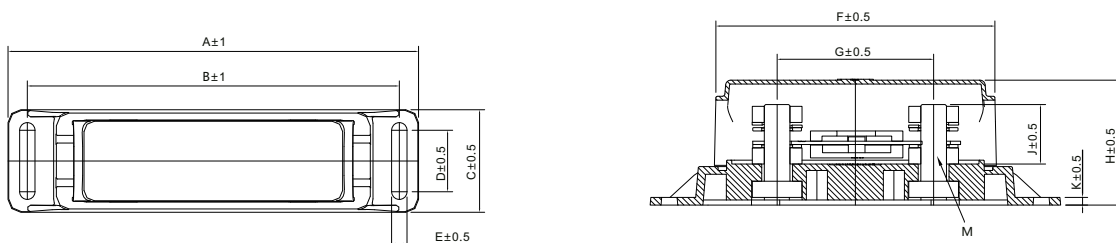
DIMENSIONS (mm)

BHR030-15-M5(AEP USE)



Part Number	A	B	C	D	E	F	G	H	J	K
BHR030-15-M5	28.2	30.5	41.5	30	6.4	35	4.5	53	9.8	25.8

BHR059-25-M8, BHR061-25-M10(AEY and AEL USE)



Part Number	A	B	C	D	E	F	G	H	J	K	M
BHR059-25-M8	160	145	40	24	6	108.7	50.9	48.7	25	3	M8
BHR061-25-M10	160	145	40	24	6	108.7	61.0	48.7	25	3	M10