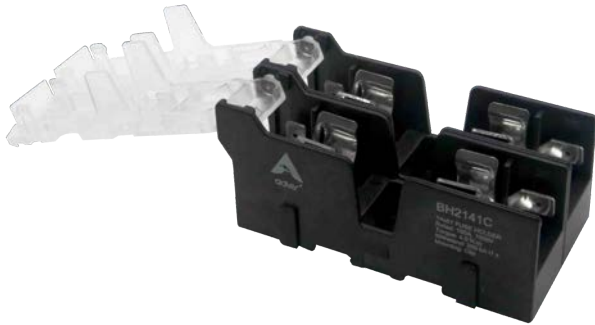


BH214 Series 14x51 mm Fuse Holder



DESCRIPTION:

The BH214 fuse holder is made of thermoplastic and is designed for 14x51 mm cylindrical fuses or bolt fuses and allows for easy mounting on flat surfaces. This holder can be mounted on DIN Rail constructions.

SPECIFICATIONS:

- Max. Voltage: 1000 Vdc
- Max. Current: 100 A
- Short-time Withstand Current: 200 kA/s
- Torque: 4 N.m
- Terminals: Tin-plated copper
- Base and Cover: Thermoplastic
- Base Material Flammability: UL 94 V0
- Cover Material Flammability: UL 94 HB
- Operational Temperature: -40 °C to 125 °C
- Ingress Protection (Cover): IP10

FEATURES:

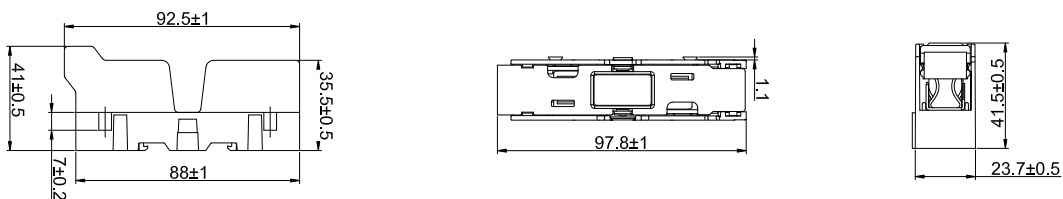
- Flexible rail mounting, easy to install with screws or bolts
- For multiple pole applications, holders can be combined in series through simple slide-on design
- Designed for general purpose fuse links

PART NUMBER

Clip Mount		t Mount		Pole
With Cover	Without Cover	With Cover	Without Cover	
BH214-1CC	BH214-1CN	BH214-1MC	BH214-1MN	1
BH214-2CC	BH214-2CN	BH214-2MC	BH214-2MN	2
BH214-3CC	BH214-3CN	BH214-3MC	BH214-3MN	3

DIMENSIONS (mm)

BH214-1CC



BH214-1MC

