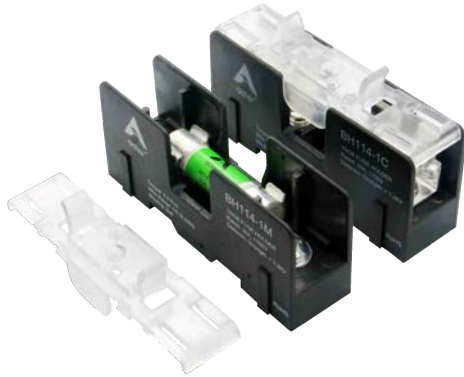


BH114 Series 10x38 mm Fuse Holder



FEATURES:

- Flexible rail mounting, easy to install with screws or bolts
- For multiple pole applications, holders can be combined in series through simple slide-on design
- Designed for general purpose fuse links

BASE PART NUMBER

Clip Mount P/N	Bolt Mount P/N	Pole
BH114-1C	BH114-1M	1
BH114-2C	BH114-2M	2
BH114-3C	BH114-3M	3

DESCRIPTION:

The BH114 fuse holder is made of thermoplastic and is designed for 10x38 mm cylindrical fuses and allows for easy mounting on flat surfaces. This holder can be mounted on DIN Rail constructions.

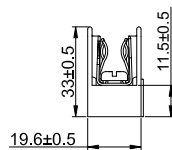
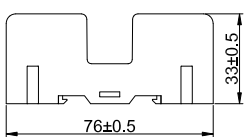
SPECIFICATIONS:

- Rated Voltage: 1100 Vdc
- Rated Current: 30 A (Clip); 50 A (Bolt)
- Dielectric Strength: >1200 V
- Wire Range: 14-7 AWG (1.6-8.4 mm²)
- Torque: 2.3 N.m (20 in-lbs)
- Clip/Terminals: Tin-plated copper alloy
- Screw and captive pressure plate: Zinc-plated steel
- Base: Thermoplastic
- Material Flammability: UL 94 V0
- Operational Temperature: -40 °C to 125 °C

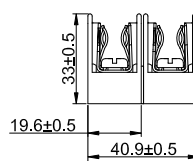
COVER PART NUMBER

Cover P/N	Indicator	Matching Base Holder
BH114-CC	Yes	Clip Mount
BH114-CL	Yes	Bolt Mount
BH114-CN	No	Clip Mount, Bolt Mount

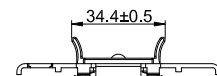
DIMENSIONS (mm)



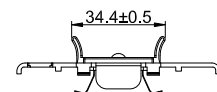
BH114-1C



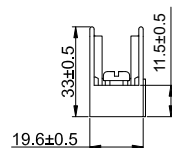
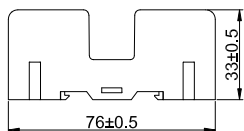
BH114-2C



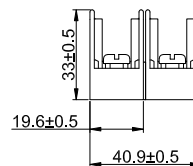
BH114-CC



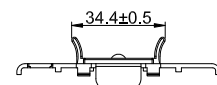
BH114-CL



BH114-1M



BH114-2M



BH114-CN