

AEX EV Fuse

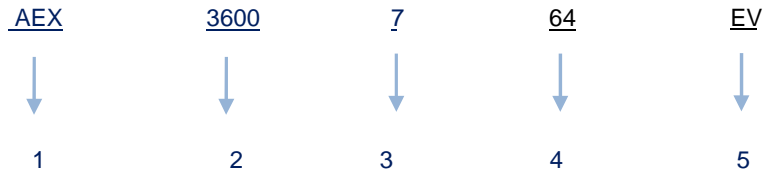


FEATURES:

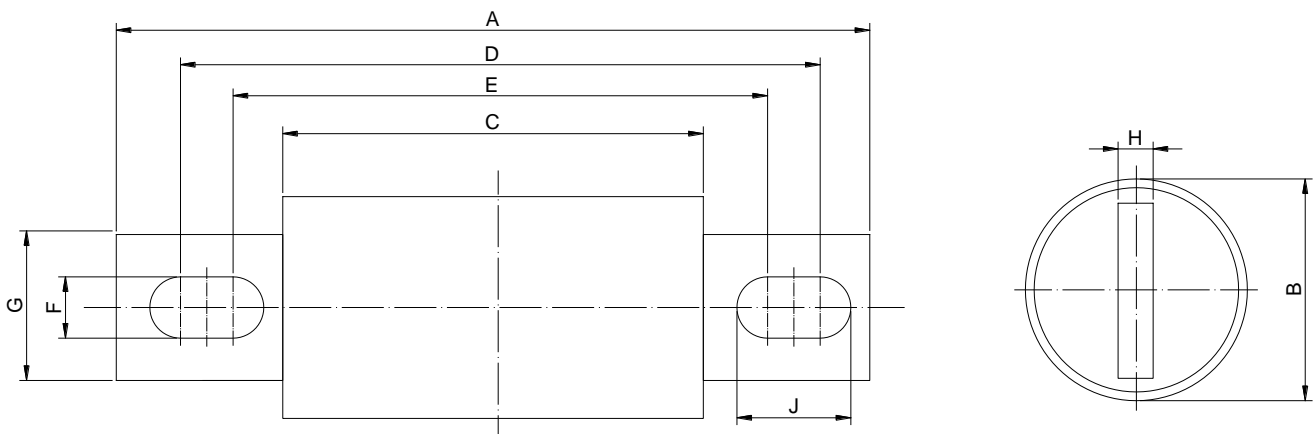
- 1000 VDC EV high-speed power fuse
- Rated Current: 70-100 A (31x86)
125-200A (38x83)
250-500A (51x89)
600A (64x88)
- Rated Breaking Capacity: 50 kA at 1000 VDC
- Time Constant: 2 ± 0.5 ms
- Dimensions: 31x86 mm, 38x83 mm, 51x89 mm, 64x88 mm
- Special purpose fuse for EV/HEV automotive use
- Ideal for high power EV PDU and battery protection
- Ref. To UL248-20; IEC 60269-4

ELECTRICAL SPECIFICATIONS

Part Number	Rated Current	Ampere Code	Rated Voltage	Breaking Capacity	Melting I^2t	Clearing I^2t	Dissipation (W)
					(A^2s)	(A^2s)	0.5In
AEX2700731EV	70A	2700	1000 VDC	50 kA@1000 VDC	1847	3879	3.63
AEX2800731EV	80A	2800			2886	6061	3.80
AEX2900731EV	90A	2900			4156	8728	4.00
AEX3100731EV	100A	3100			5657	11880	4.24
AEX3125738EV	125A	3125			7389	15517	5.58
AEX3150738EV	150A	3150			11545	24245	6.43
AEX3175738EV	175A	3175			17680	37129	7.07
AEX3200738EV	200A	3200			29556	62068	7.14
AEX3250751EV	250A	3250			41678	87525	9.71
AEX3300751EV	300A	3300			66501	139653	11.07
AEX3350751EV	350A	3350			90515	190083	12.91
AEX3400751EV	400A	3400			115000	280275	13.50
AEX3500751EV	500A	3500			133000	320000	15.73
AEX3600764EV	600A	3600			221000	386000	20.3

PART NUMBER SYSTEM


- 1Product Series AEX
- 2 Ampere Code600 A (see ampere code column of electrical specifications)
- 3Rated Voltage..... 7: 1000V
- 4 Supplementary Code..... 31, 38, 51, 64: default
- 5 Application code EV

DIMENSIONS (mm)


P/N	A	B	C	D	E	F	G	H	J
AEXxxx731EV	125±0.8	31±0.5	86±0.8	109±0.8	102±0.8	8.5±0.2	22±0.5	5±0.1	12.0±0.5
AEXxxx738EV	140±0.8	38±0.5	83±0.8	118±0.8	100±0.8	10.5±0.2	25±0.5	6±0.1	19.5±0.5
AEXxxx751EV	146±0.8	51±0.5	89±0.8	126±0.8	107±0.8	10.5±0.2	38±0.5	6±0.1	20.0±0.5
AEXxxx764EV	196±1.2	64±0.5	88±0.8	162±1.2	122±1.2	13.0±0.2	50±0.5	10±0.1	33.0±0.5

TIME CURRENT CURVE

