

## AE7 EV Fuse



### DESCRIPTION

Adler AE7 series EV fuses are specially engineered and tested to provide best-in-class auxiliary protection and high-performance protection in managing systems of Electrical and Hybrid Electrical Vehicles, up to 800 Vdc in ratings from 60 – 600 A. The AE7 fuse was specially built to meet the stringent requirements and standards of the electric vehicle industry.

### FEATURES

- 800 Vdc EV high-speed power fuse
- Rated Current: 60-150 A (25x66)  
175-400 A (38x72)  
450-600 A (51x72)
- Breaking Capacity: 50 kA @ 800 VDC
- Time Constant: 2±0.5 ms
- Size: 25x66 mm, 38x72 mm, 51x72 mm
- Special purpose fuse for EV/HEV automotive use
- For high power EV PDU and battery protection
- Recommended fuse holder: BFR094-35-M8, BFR099-70-M10

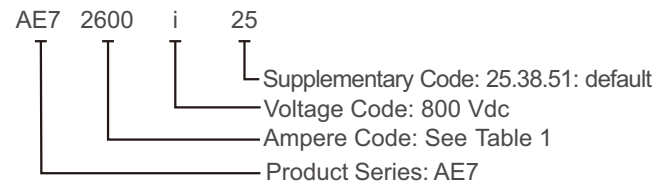
### AGENCY INFORMATION

- Designed to UL248-20; IEC 60269-4
- UL certified (E506666)
- Manufactured under IATF 16949 quality system
- RoHS and REACH Compliant

### APPLICATIONS

- Battery pack protection
- Traction inverter protection
- Energy storage
- Power conversion
- High voltage power distribution
- Battery disconnect unit
- Primary Fuse
- Charging Fuse
- Auxiliary Fuses

### PART NUMBER SYSTEM

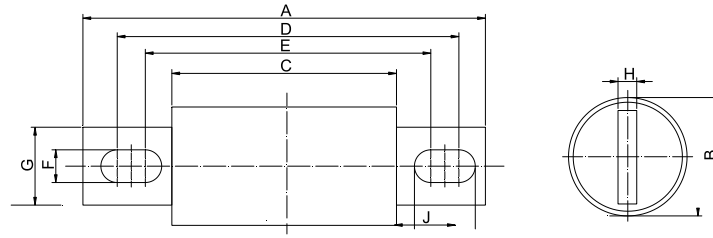


### ELECTRICAL SPECIFICATIONS

Size (mm)	Part Number	Rated Current	Ampere Code	Rated Voltage	Breaking Capacity	Melting I <sup>2</sup> t (A <sup>2</sup> s)	Clearing I <sup>2</sup> t (A <sup>2</sup> s)	Dissipation (W) 0.5 In	Certifications UL
25x66	AE72600I25	60 A	2600	800 Vdc	50 kA@800 Vdc	5800	15373	3.00	•
	AE72700I25	70 A	2700			6860	17935	3.50	•
	AE72800I25	80 A	2800			8960	23425	4.00	•
	AE73100I25	100 A	3100			14000	36601	5.00	•
	AE73125I25	125 A	3125			23000	60131	5.50	•
	AE73150I25	150 A	3150			31000	81046	6.00	•
38x72	AE73175I38	175 A	3175	800 Vdc	50 kA@800 Vdc	40000	104575	6.56	•
	AE73200I38	200 A	3200			52000	135948	7.50	•
	AE73250I38	250 A	3250			57937	138468	9.38	•
	AE73300I38	300 A	3300			69524	181762	11.25	•
	AE73350I38	350 A	3350			81111	212055	13.13	•
	AE73400I38	400 A	3400			92698	242349	15.00	•
51x72	AE73450I51	450 A	3450	800 Vdc	50 kA@800 Vdc	104285	272643	15.00	•
	AE73500I51	500 A	3500			115873	302936	16.67	•
	AE73560I51	560 A	3560			129777	339289	18.67	•
	AE73600I51	600 A	3600			139047	363524	20.00	•

Table1 Note:1.●=Certification obtained. UL File number:E506666

**DIMENSIONS (mm)**



Size	A	B	C	D	E	F	G	H	J
25x66	111±0.8	25±0.5	66±0.8	95±0.8	93±0.8	9.0±0.5	18±0.5	3.2±0.1	10.0±0.5
38x72	129±0.8	38±0.5	72±0.8	107±0.8	89±0.8	10.5±0.5	25±0.5	6±0.1	19.5±0.5
51x72	129±0.8	51±0.5	72±0.8	109±0.8	90±0.8	10.5±0.5	38±0.5	6±0.1	20.0±0.5

Table2

**TIME CURRENT CURVE**

